

# Coming Soon... to public lands near you *unless you speak up*

Your input is needed now on the DRECP  
(Desert Renewable Energy Conservation Plan)

## Tell the DRECP –

- YES** to preserving the California desert  
and recreational use of public lands
- YES** to point-of-use energy (rooftop solar)
- NO** to power transmission corridors  
through public lands
- NO** to utility-scale projects that fence us  
out of collecting areas

Comment directly:  
[www.drecp.org](http://www.drecp.org)

Take the Survey:  
[www.sdmng.org](http://www.sdmng.org)

Sign on to letters and petitions:  
[www.tubbcanyondesertconservancy.org](http://www.tubbcanyondesertconservancy.org)  
[www.basinandrangewatch.org](http://www.basinandrangewatch.org)  
[www.a4dp.org](http://www.a4dp.org)

San Diego Mineral & Gem Society

Cover: (Composite photo) Father and child at Lavinia Siding rock collecting area, Mojave Desert, by Kris Rowe; wind turbines by Wiki user Z22. Design: © 2015 Lisbet Thoresen – all rights reserved

## ***Desert Renewable Energy Conservation Plan (DRECP)***

**L**and usage encompassing 22.5 million acres of California's deserts will be administered according to DRECP guidelines for the next 25 years. The plan makes a mosaic of the desert, allowing for the building of utility-scale energy projects on 177,000 acres of public lands and on adjacent private lands designated as Development Focus Areas (DFAs). The DRECP's implementation will pave the way for large industrial developments to be connected to the power grid via transmission towers running through previously untouched wild lands (Figure 1).

Southern California desert communities can look forward to the unspoiled vistas and natural environment they value being blighted. Areas previously accessible for recreational uses, including sites that have been popular with amateur rockhounds for many decades, may be closed or become inaccessible due to trail and road closures on adjacent lands. At the least, recreational users can look forward to restricted access and an uncertain future in which development trumps other considerations on BLM-administered lands.

Certainly, renewable energy sources are a desirable alternative to fossil fuels and "dirty" energy sources, but large-scale renewable energy projects built throughout California to date have not proven, in fact, to be all that green or economical or even sustainable. Project scale, site selection, and the vagaries of the weather are critical factors that have made a mirage of a green energy oasis ever rising up in the desert landscape. The natural dust and heat of the Mojave may be intractable obstacles to success, while the impact on wildlife and habitat exacts a disastrous toll.

There are better alternatives to sacrificing California's desert in order to achieve goals that are both economically and environmentally sustainable. Point-of-use, or distributed energy generation (DG), such as rooftop solar, produces energy at or near where it will be used, but no DG proposals are included among the DRECP's five alternative plans.

The DRECP is not going away, it will be with us for decades to come. A small window of time remains to correct its defects. This will only happen with public review and cogent input.

- The BLM needs to know your concerns about preserving the desert environment.
  - The BLM needs to know about the specific areas for which recreational uses or conservation concerns are important to you.
  - The BLM needs to know your opinion about distributed energy generation as a truly green and sustainable alternative to utility-scale projects.
- Most important, the BLM needs to hear from you – NOW.

**The comment period on the DRECP has been extended through February 23, 2015.**

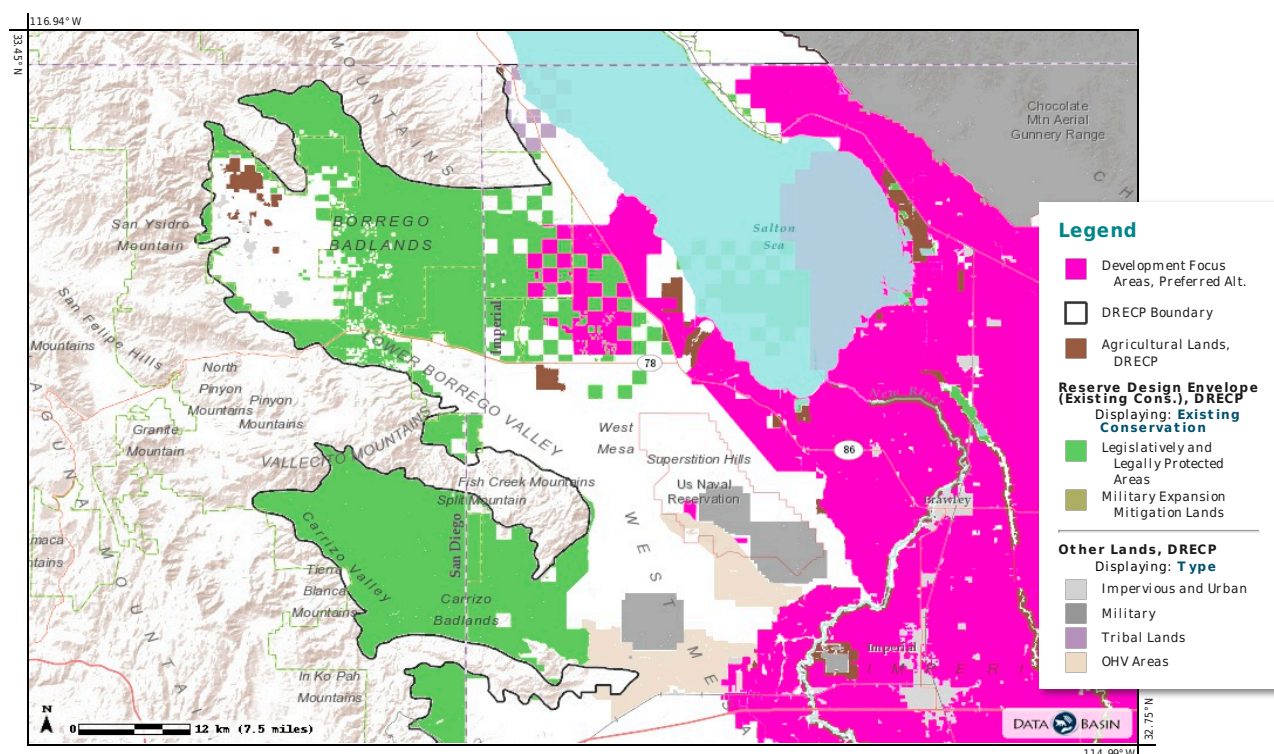


Figure 1. DRECP DFAs and Anza-Borrego Desert State Park. Map: J. David Garmon.

***More resources ...***  
**(DRECP background, renewable energy alternatives,  
vulnerable collecting areas,  
and tips on writing an effective comment letter)**

[www.basinandrangewatch.org](http://www.basinandrangewatch.org)

[dpcinc.org](http://dpcinc.org)

[www.mojavec3.org](http://www.mojavec3.org)

[www.mojavedesertblog.com](http://www.mojavedesertblog.com)

[blm.sdmg.org](http://blm.sdmg.org)

[www.sustainablelearningcenter.com](http://www.sustainablelearningcenter.com)

[www.tubbcanyondesertconservancy.org](http://www.tubbcanyondesertconservancy.org)